

# Alaska Department of Fish and Game

Habitat Section  
Southeast Region



## 114-33-10230 Tributary 3

## ADDITION

**Water body name:**

**Survey date:** 6/5/2022; 9/13/2022

**Quad:** Juneau A-6

**Species & Lifestage:**

**Upper Reach Latitude:** 58.070077 **Longitude:** -135.831379 **Survey crew:** DK, JL, FC, EF, RR

**Lower Reach Latitude:** 58.072534 **Longitude:** -135.816448

**Findings:** We surveyed this uncataloged stream using a backpack electrofisher, baited minnow traps, and GPS. We captured juvenile coho salmon, Dolly Varden, cutthroat trout, and sculpin. The tributary stream flows through a broad gravel channel with quality spawning and rearing habitat (Table 1; Figures 1–4).

**Recommendations:** Add this uncataloged stream to the anadromous waters catalog for rearing coho salmon (Figure 5).

**Nomination:** Pending

Table 1.—114-33-10230 tributary 3 survey data.

| Waypoint | Latitude  | Longitude   | Notes  | Stream Width ft | Stream Substrate             | Habitat Features             | Gradient % | Sample Effort | Sample Results        |
|----------|-----------|-------------|--|-----------------|------------------------------|------------------------------|------------|---------------|-----------------------|
| 448      | 58.070402 | -135.830492 | All flow through one of two 5' wide culverts. Looks like good adult CO habitat; adult spawning gravel potential. Only SC fish capture. | 12-15           | Small Gravel                 |                              | 2-4        | EF            | 5 SC                  |
| 1770     | 58.070275 | -135.830846 | Minnow trap set in rootwad upstream of culvert inlet.  |                 |                              | Spawning Substrate Cut Banks |            |               |                       |
| 1771     | 58.070081 | -135.831400 | Juvenile CO everywhere.  | 12-15           | Small Gravel<br>Large Gravel | Spawning Substrate Cut Banks | 2-4        | VI            | 12 CO                 |
| 1797     | 58.070260 | -135.830825 | Minnow trap retrieval.   |                 |                              |                              |            | MT            | 21 CO<br>2 DV<br>1 CT |
| 1803     | 58.070327 | -135.830441 | Two 5' CMP, flow only in one culvert. Passable at most flows.  |                 |                              |                              |            |               |                       |



Figure 1.—Juvenile coho salmon captured at waypoint 1797.



Figure 2.—Side-by-side culvert outlets at waypoint 448.





Figure 3.—Culvert outlet at waypoint 448.



Figure 4.—Upstream view of channel at waypoint 1771.



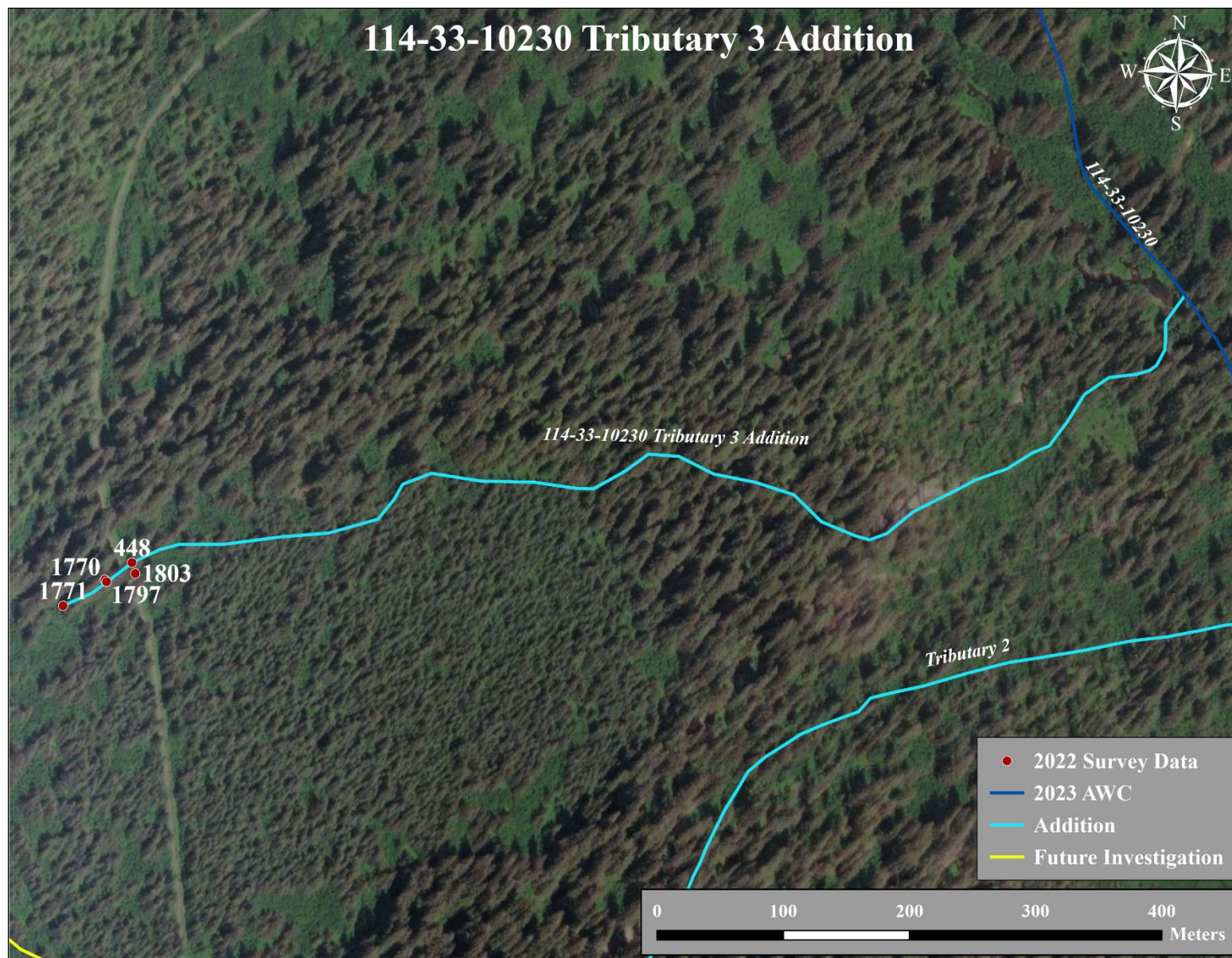


Figure 5.—114-33-10230 tributary 3 addition map.